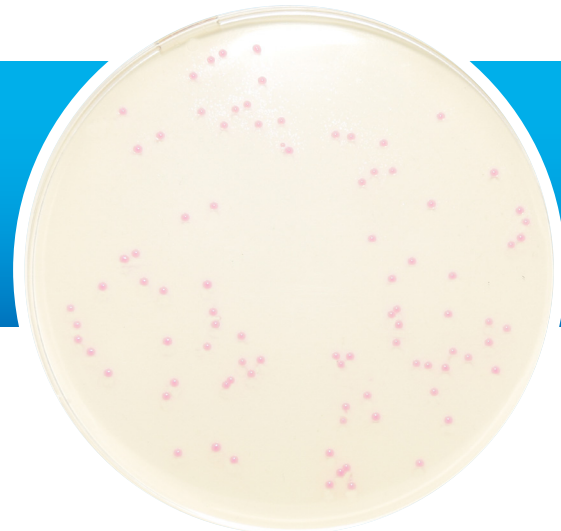


PP3044 COLOREX™ STAPH AUREUS



Staphylococcus aureus is a pathogenic organism of significant importance in the clinical field (see Colorex™ MRSA) as well as the food processing industry. *Staphylococcus aureus* expresses a wide range of potential virulence factors that allow the organism to infect numerous sites on the human body. The production of powerful enterotoxins also leads to cases of food poisoning and toxic shock syndrome.

Latest figures for England show that *Staphylococcus aureus* was responsible for 17,404 cases of bacteraemia (36.7% due to MRSA) in 2006/07 and 39% of all surgery-related infections (64% due to MRSA) from 2002-2007.⁽¹⁾

Colorex™ Staph aureus provides a cost effective solution for the detection of *Staphylococcus aureus*, especially in plurimicrobial samples. It has been shown to effectively reduce the requirement for confirmation work on other *Staphylococcus* spp. that may grow on conventional media.⁽²⁾

Staphylococcus aureus – Mauve colonies

Other bacterial species – Blue or colourless colonies or inhibited

This is a chromogenic medium for the isolation and presumptive identification of *Staphylococcus aureus*. Mauve colonies indicate *Staph aureus* following incubation (18 – 24 hours) at 37°C, other organisms, if not inhibited, are indicated by blue or colourless colonies.

Studies have suggested that this media has a specificity and sensitivity of 99.4% and 95.5% respectively.⁽²⁾

⁽¹⁾ Surveillance of Healthcare Associated Infections Report 2007 – HPA

⁽²⁾ Gaillot O. et al. 2001. Journal of Clinical Microbiology, 38: 1587-1591

Formula	gm/litre	Properties	
Peptones & Yeast Extract	40.0	Appearance	Firm Gel
Salts	25.0	Colour	Straw
Agar	15.0	pH	6.9 ± 0.2
Chromogenic Mix	2.5	Storage	2 - 8 °C
		Shelf Life	42 days

Quality Control Test Organisms	Ref. No.	Result
<i>Staphylococcus aureus</i>	NCTC 12981	Mauve / Pink Colonies
<i>Staphylococcus epidermidis</i>	NCTC 13360	Inhibited
<i>Enterococcus faecalis</i>	NCTC 12697	Inhibited

Recommended Incubation : Aerobically at 37°C ± 1°C for 18 - 24 hours